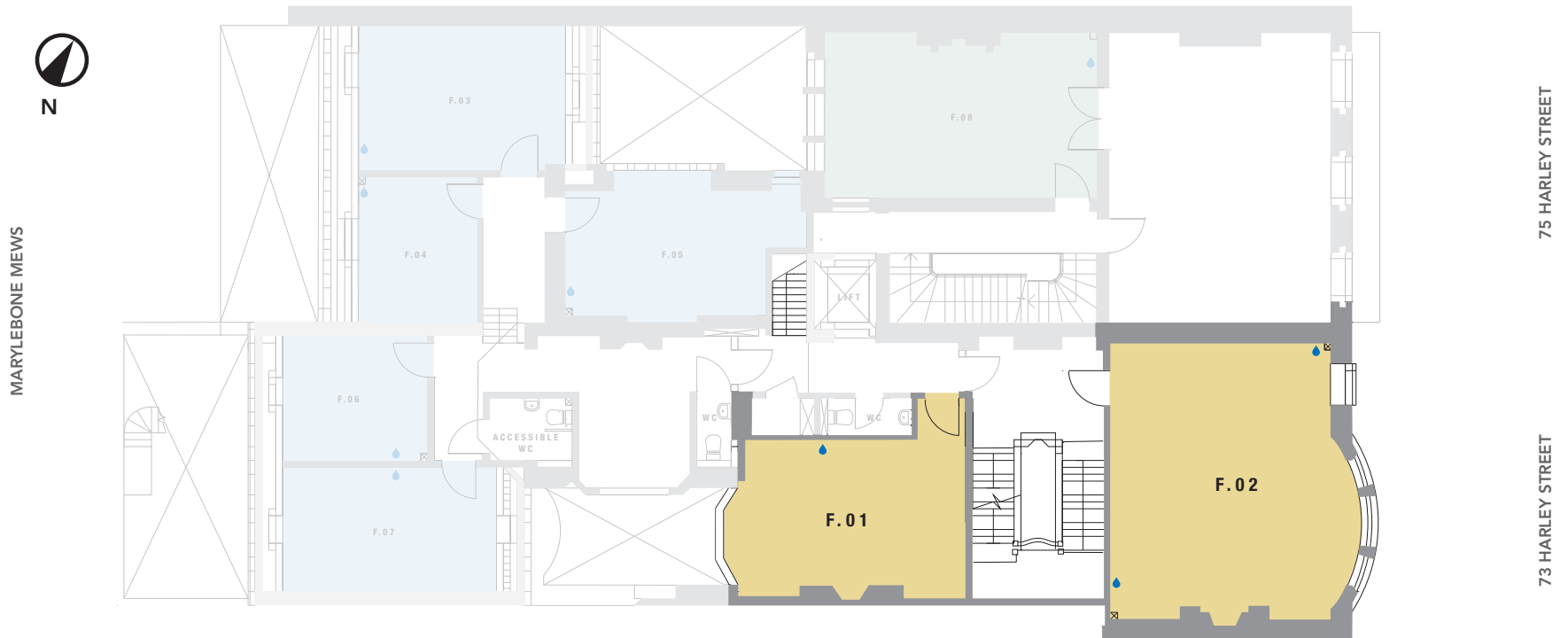


FIRST FLOOR SUITE 6

TOTAL : 818.38 sq ft / 76.03 sq m

N^o. 75
HARLEY STREET
MARYLEBONE W1



NOTE: all areas are approximate and will be verified on completion in accordance with RICS Code of Measuring Practice.

F.01 : 294.93 sq ft / 27.40 sq m

F.02 : 523.45 sq ft / 48.63 sq m

 Capped off water, drainage & electricity for hand basins

**THE
HOWARD
de
WALDEN
ESTATE**

MEDICAL LETTINGS

t: +44 (0)20 7290 0970

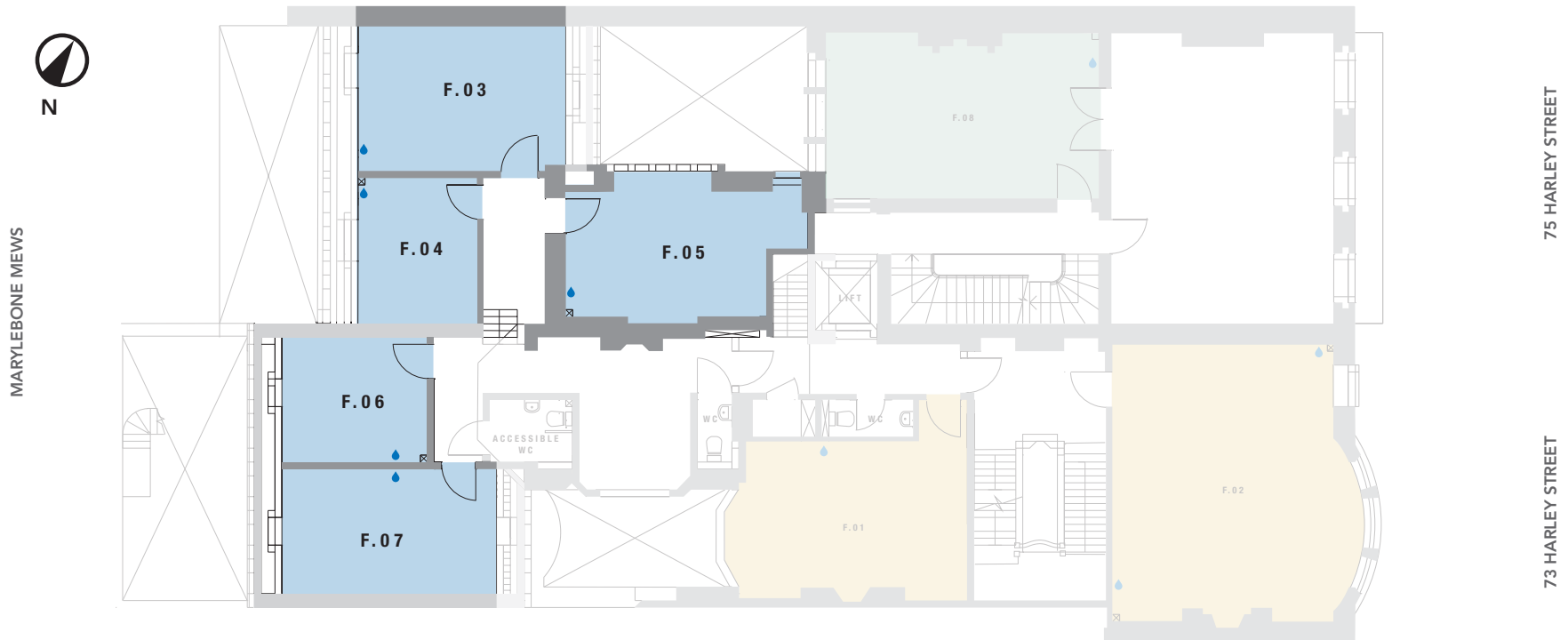
e: medical@hdwe.co.uk

w: hdwe.co.uk

FIRST FLOOR SUITE 7

TOTAL : 1,011.81 sq ft / 94 sq m

N^o. 75
HARLEY STREET
MARYLEBONE W1



NOTE: all areas are approximate and will be verified on completion in accordance with RICS Code of Measuring Practice.

F.03 : 251.77 sq ft / 23.39 sq m F.06 : 149.19 sq ft / 13.86 sq m

F.04 : 148.97 sq ft / 13.84 sq m F.07 : 223.89 sq ft / 20.80 sq m

F.05 : 237.99.76 sq ft / 22.11 sq m

💧 Capped off water, drainage & electricity for hand basins

**THE
HOWARD
de WALDEN
ESTATE**

MEDICAL LETTINGS

t: +44 (0)20 7290 0970

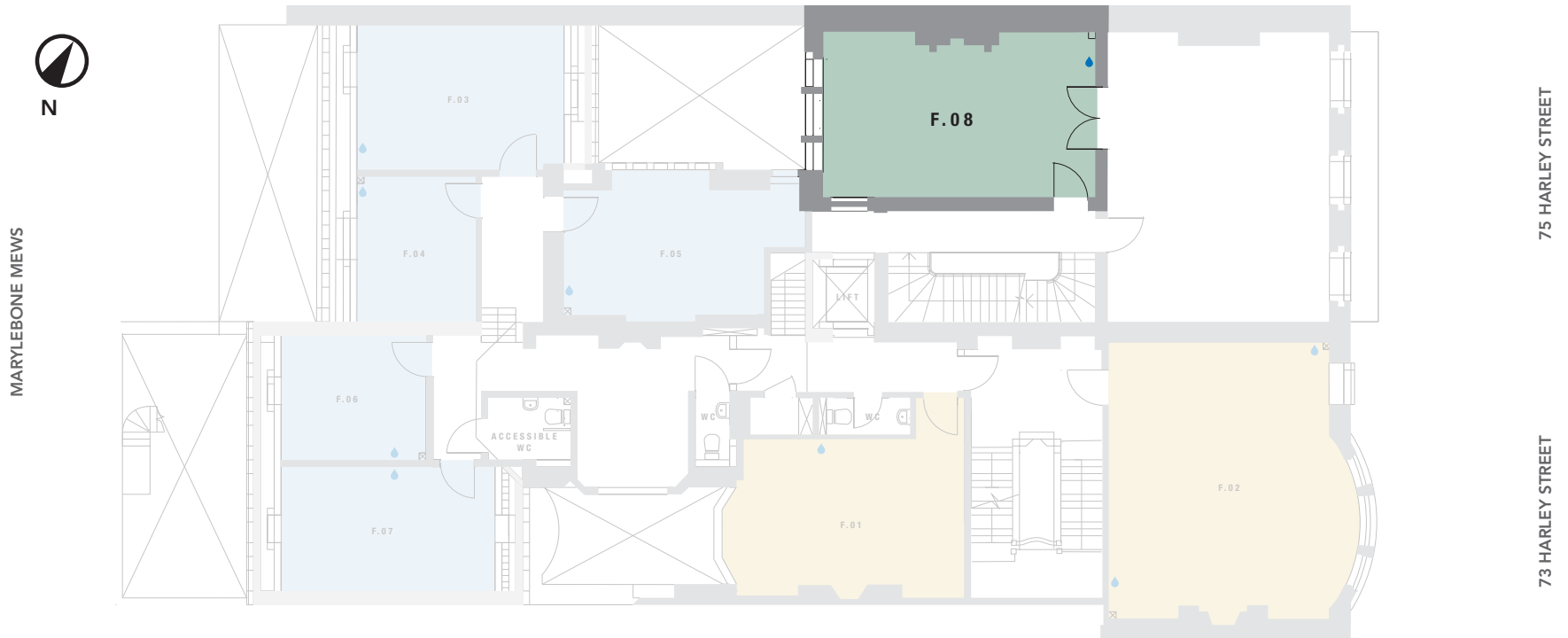
e: medical@hdwe.co.uk

w: hdwe.co.uk

FIRST FLOOR SUITE 8

TOTAL : 371.36 sq ft / 34.50 sq m

N^o. 75
HARLEY STREET
MARYLEBONE W1



NOTE: all areas are approximate and will be verified on completion in accordance with RICS Code of Measuring Practice.

F.08 : 371.36 sq ft / 34.50 sq m

● Capped off water, drainage & electricity for hand basins

**THE
HOWARD
de
WALDEN
ESTATE**

MEDICAL LETTINGS
t: +44 (0)20 7290 0970
e: medical@hdwe.co.uk
w: hdwe.co.uk

FIRST FLOOR MEZZANINE

TOTAL : 237.99 sq ft / 22.11 sq m

N^o. 75
HARLEY STREET
MARYLEBONE W1



NOTE: all areas are approximate and will be verified on completion in accordance with RICS Code of Measuring Practice.

 Capped off water, drainage & electricity for hand basins

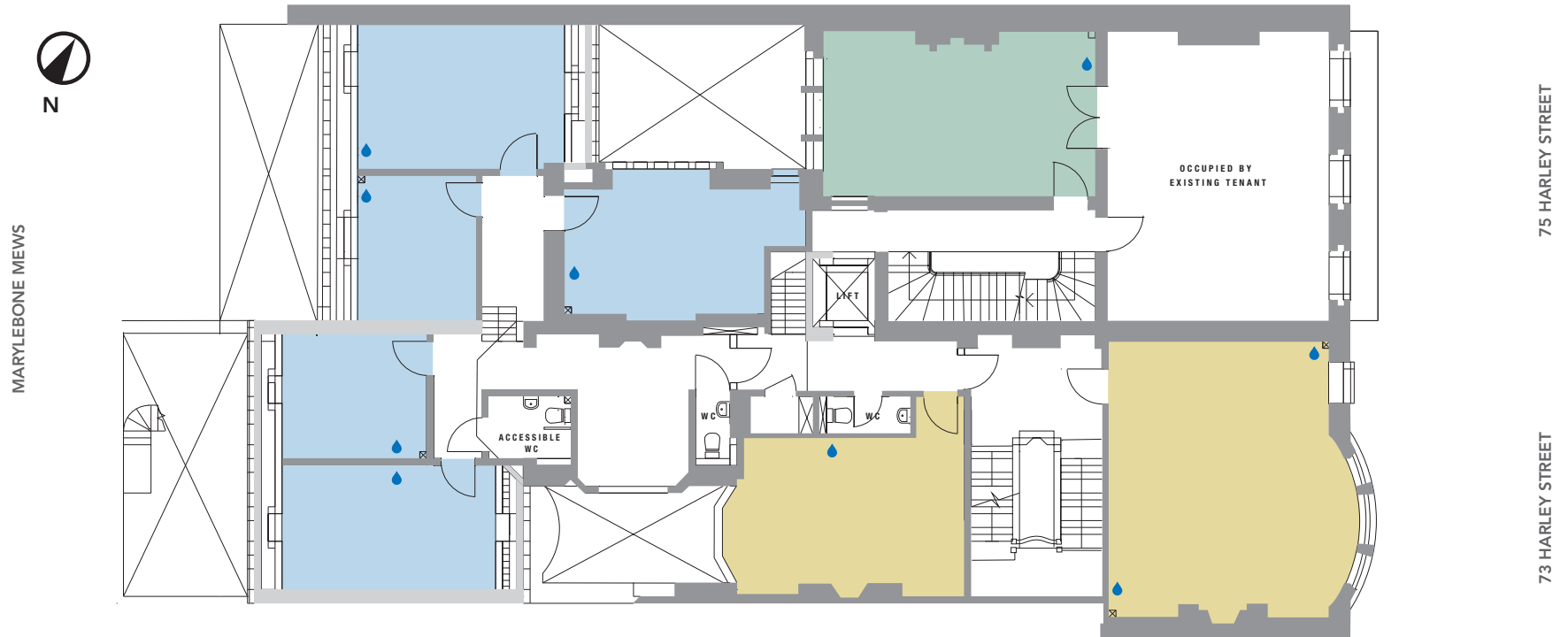
**THE
HOWARD
de
WALDEN
ESTATE**

MEDICAL LETTINGS
t: +44 (0)20 7290 0970
e: medical@hdwe.co.uk
w: hdwe.co.uk

FIRST FLOOR

TOTAL : 2,439.54 sq ft / 226.64 sq m

N^o. 75
HARLEY STREET
MARYLEBONE W1



NOTE: all areas are approximate and will be verified on completion in accordance with RICS Code of Measuring Practice.

■ Suite 6 ■ Suite 7 ■ Suite 8 ■ Capped off water, drainage & electricity for hand basins

**THE
HOWARD
de WALDEN
ESTATE**

MEDICAL LETTINGS
t: +44 (0)20 7290 0970
e: medical@hdwe.co.uk
w: hdwe.co.uk