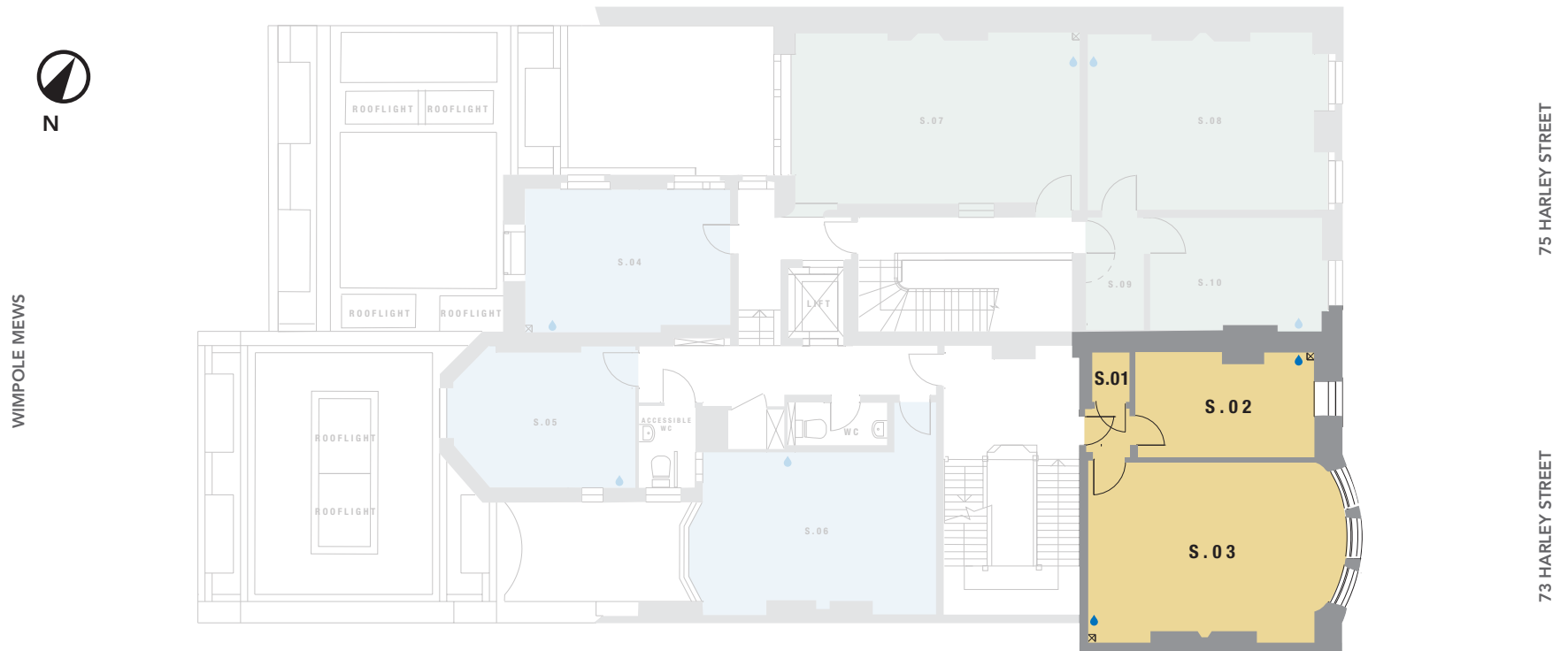


SECOND FLOOR SUITE 10

TOTAL : 482.12 sq ft / 44.79 sq m

N^o. 75
HARLEY STREET
MARYLEBONE W1



NOTE: all areas are approximate and will be verified on completion in accordance with RICS Code of Measuring Practice.

S.01 : 10.44 sq ft / 0.97 sq m

S.02 : 150.27 sq ft / 13.96 sq m

S.03 : 321.41 sq ft / 29.86 sq m

 Capped off water, drainage & electricity for hand basins

**THE
HOWARD
de
WALDEN
ESTATE**

MEDICAL LETTINGS

t: +44 (0)20 7290 0970

e: medical@hdwe.co.uk

w: hdwe.co.uk

SECOND FLOOR SUITE 11

TOTAL : 709.89 sq ft / 65.95 sq m

N^o. 75
HARLEY STREET
MARYLEBONE W1



NOTE: all areas are approximate and will be verified on completion in accordance with RICS Code of Measuring Practice.

S.04 : 219.59 sq ft / 20.40 sq m

S.05 : 185.03 sq ft / 17.19 sq m

S.06 : 305.27 sq ft / 28.36 sq m

💧 Capped off water, drainage & electricity for hand basins

**THE
HOWARD
de
WALDEN
ESTATE**

MEDICAL LETTINGS

t: +44 (0)20 7290 0970

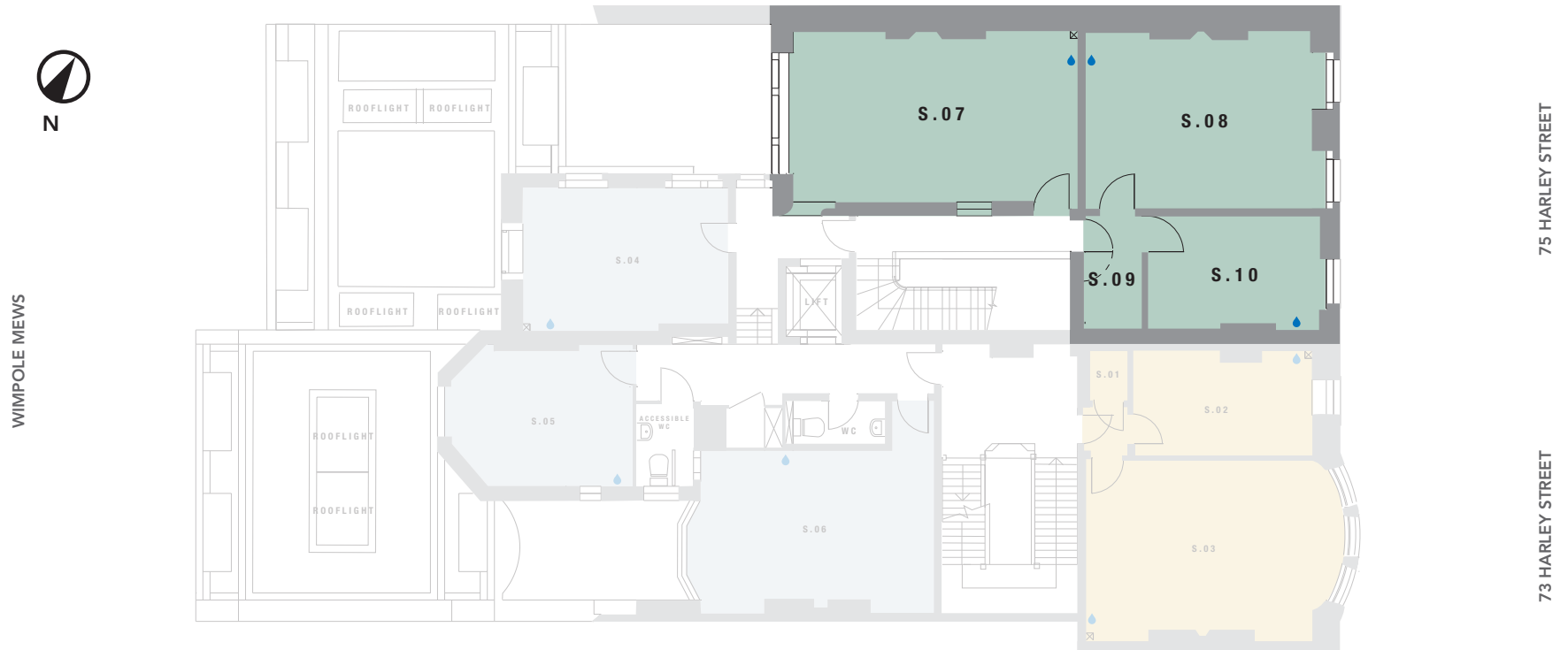
e: medical@hdwe.co.uk

w: hdwe.co.uk

SECOND FLOOR SUITE 12

TOTAL : 903.75 sq ft / 83.96 sq m

N^o. 75
HARLEY STREET
MARYLEBONE W1



NOTE: all areas are approximate and will be verified on completion in accordance with RICS Code of Measuring Practice.

S.07 : 388.37 sq ft / 36.08 sq m

S.09 : 50.48 sq ft / 4.69 sq m

S.08 : 313.66 sq ft / 29.14 sq m

S.10 : 151.23 sq ft / 14.05 sq m

💧 Capped off water, drainage & electricity for hand basins

**THE
HOWARD
de
WALDEN
ESTATE**

MEDICAL LETTINGS

t: +44 (0)20 7290 0970

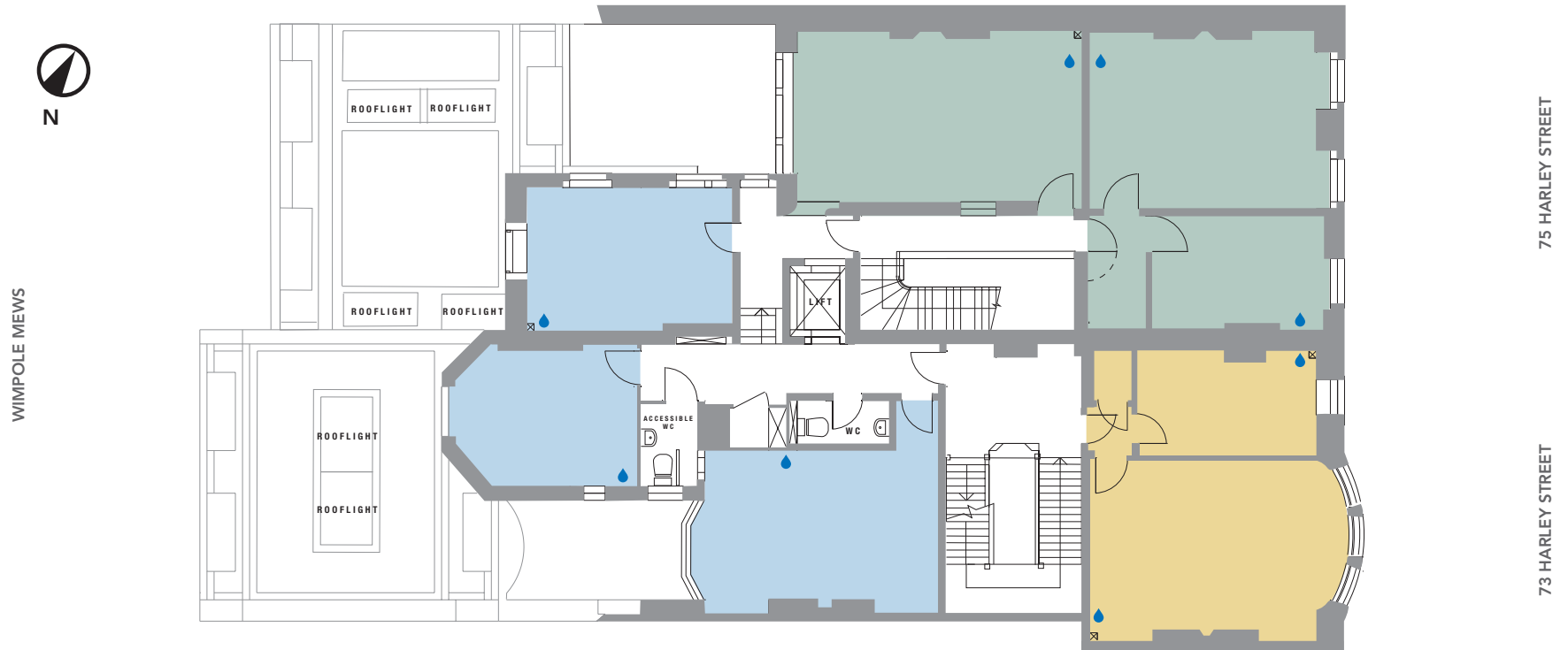
e: medical@hdwe.co.uk

w: hdwe.co.uk

SECOND FLOOR

TOTAL : 2,095.75 sq ft / 194.7 sq m

N^o. 75
HARLEY STREET
MARYLEBONE W1



NOTE: all areas are approximate and will be verified on completion in accordance with RICS Code of Measuring Practice.

■ Suite 10 ■ Suite 11 ■ Suite 12 ■ Capped off water, drainage & electricity for hand basins

**THE
HOWARD
de
WALDEN
ESTATE**

MEDICAL LETTINGS
t: +44 (0)20 7290 0970
e: medical@hdwe.co.uk
w: hdwe.co.uk